

Andy and Emma Dipper are serving with Mission Aviation Fellowship (MAF). They are seconded from MAF UK to MAF USA whereby Andy is Regional Director for Indonesia which is their largest region of operations. MAF provides access to the most remote regions of the world through light aircraft. Emma supports the MAF team in Indonesia alongside Andy and is working on specific global projects with MAF USA. She hopes to begin her PhD research eventually!



Together in Bali for New Year!



Polly about to take the co-pilot's seat in Tarakan



Anniversary Event in Jakarta

straight off a long-haul flight from the UK!

As Polly joined us for a month at the end of 2024, we wanted her to share her insights with you. Polly is a student at Edinburgh university and the youngest of our three daughters.

### # Indonesia: through Polly's eyes

*After a month following Mum and Dad through a few corners of this vibrant country, I feel I have gained a better perspective at the life they lead and lives they impact. We travelled between Jakarta, North Kalimantan and Bali, and we sure did have a full schedule. I had the opportunity to see Dad in action at the airport hangar with a skilled team in the small island of Tarakan (even managed to squeeze into a plane and fly around the jungle with one of the pilots, with 5 flights in one day it was a beautiful adventure). Also, I picked up some valuable phrases in Bahasa Indonesian, helping revise with mum after the daily 2-hour lessons. These two oldies are doing well at picking up a new language so late in life. I taught a few science lessons to 7 kids from the missionary families and experimented with the local nature - which gave their parents a little respite from home-schooling. Between their international zoom meetings at crazy-o'clock and pastoral check ins with the team, we also got up to a lot of fun! As we gathered with the other sisters and bro-in-law in Bali, it was a well-needed time to slow down and see Mum and Dad holiday in style, either clad in snorkelling gear or sipping Bali kopi (coffee) overlooking (as mum would say) a stunning view haloo. It was a precious time to see their day to day and trust in the solid community they have built across the country. I don't doubt they will be adopted into each family with every visit but the transiency of their roles does mean they need regular calls from home to stay grounded in love. For their next time in Indonesia, I'm glad I have insight into the roads they will drive down and faces they will spend time with.*

### Critically looking at Impact

Having Polly with us enabled us to reflect more on what we are doing. She always asks excellent questions of us both and has since she was tiny! The challenge that we raised with her with the impact of what we were doing on our own carbon footprint due to the multiple and long-haul flights we do in a year. Yes, we can justify it as part of our essential function, but we can't ignore it. To offset some of it we are trying to make changes where we can, such as having an electric car in the UK which we acquired in January and making continual use of our solar power on our



February 2025

house that we have had for over 10 years. The uneasiness that these conversations raise is very important. We do not want to ignore this issue and ask that you can help us to think through how we continue to be better stewards of the God's earth.

Over the next few months our **Dipper Diary** will look *something* like this...

**Current – 3<sup>rd</sup> (Emma) and 9<sup>th</sup> (Andy) March** Indonesia. Mostly in Jakarta with a trip to Kalimantan

**10<sup>th</sup> March -22<sup>nd</sup> April** Mostly both based in the UK except...

**30<sup>th</sup> March – 12<sup>th</sup> April** Andy in Nampa, Idaho

**22<sup>nd</sup> April – 20<sup>th</sup> May** Indonesia

**20<sup>th</sup> May** in the UK til mid/late June

#### Thank You Events!

We can't believe it is nearly 2 years since we began this journey with MAF! So, to say thank you for your support we would love to see you this spring and summer!

**25<sup>th</sup> May Afternoon Tea @** All Nations Christian College SG12 8LX at 2.30-4.30pm [RSVP to this EVENT](#) or email [edipper@maf.org](mailto:edipper@maf.org)

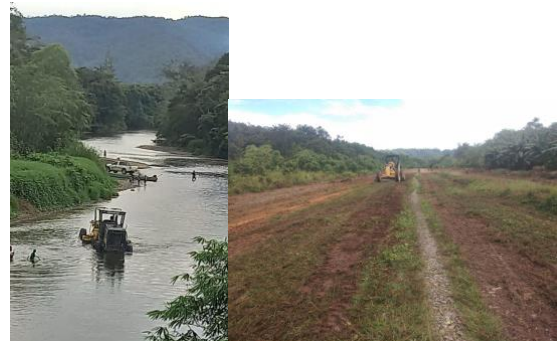
**7<sup>th</sup> June Strawberries and Cream @** All Saints, Marcham OX13 6NP at 2.30-4.30pm [RSVP to this EVENT](#) or email [edipper@maf.org](mailto:edipper@maf.org)

**31<sup>st</sup> July A Gathering @** the Keswick Convention so would love to meet anyone in that part of the world or on hols on the grass by Derwent Water at 3pm (weather dependent) Please RSVP by texting Emma on 07932581962

#### You can't fly unless you can land!

Two of our Indonesian team, Nelson and Isto, spent two nights on the interior area of N. Kalimantan overseeing repairs on the Long Lebusan project. We're so grateful that the adjacent river was low enough that they were able to drive some heavy equipment through the river to the airstrip to make the necessary repairs. We are so grateful for their commitment and hard work. The only other airstrip in the area, Mahak Baru, will soon be closed for some extensive repairs and improvements, so we're relieved to make such good progress on getting

Lebusan reopened to keep that area connected with flights.



In this wonderful but crazy world, these words ring louder and louder to us.



*“Do nothing from rivalry or conceit, but in humility count others more significant than yourselves. Let each of you look not only to your own interests, but also to the interests of others.”* Written by a leader to his friends whilst incarcerated in prison. Phil: 2:3-4

Love, Andy and Emma

[adipper@maf.org](mailto:adipper@maf.org)



February 2025

We continue to update two  Signal Groups, one for prayer requests and the other for general news, photos and videos. In addition we have also set up duplicate groups on the WhatsApp  platform as the Signal groups are getting too big for videos and some of you have found it challenging to access. Please email Emma to let her know if you'd like to join any of these groups or click on the links below from your phone.

[A&E News](#)

[A&E Prayer Log](#)

We have a tremendous group of people supporting us financially through giving to MAF as Andy receives an allowance for this role in MAF. If you'd like to contribute, then please go to this link.  
<https://www.maf-uk.org/get-involved/support-our-staff/andy-and-emma-dipper/>

In addition, another group of generous friends support our family and Emma's work through a Stewardship account where you can give here if you wish.  
<https://www.stewardship.org.uk/partners/20028006>